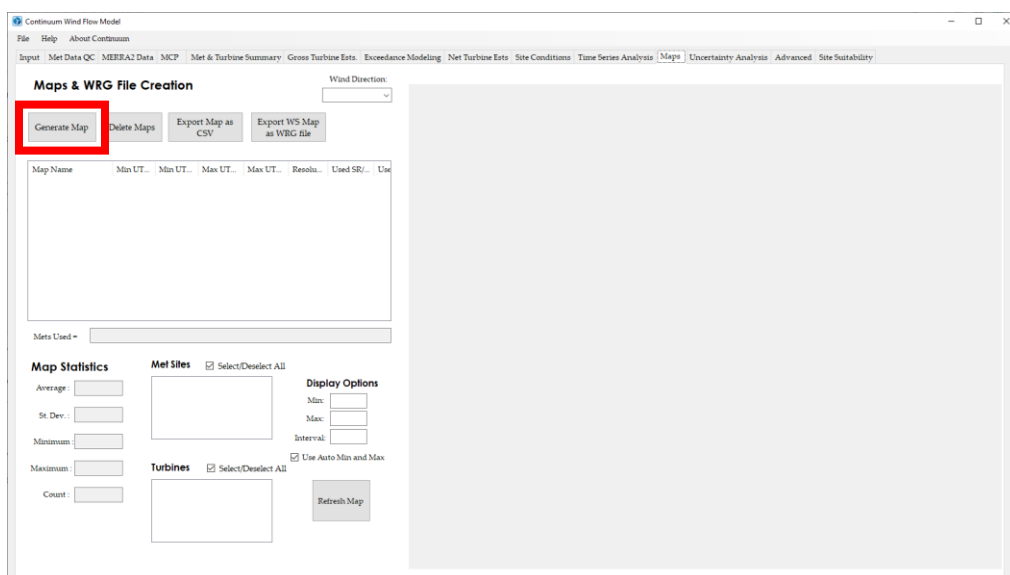


How to create WS maps and WRG files

Tutorial Summary:

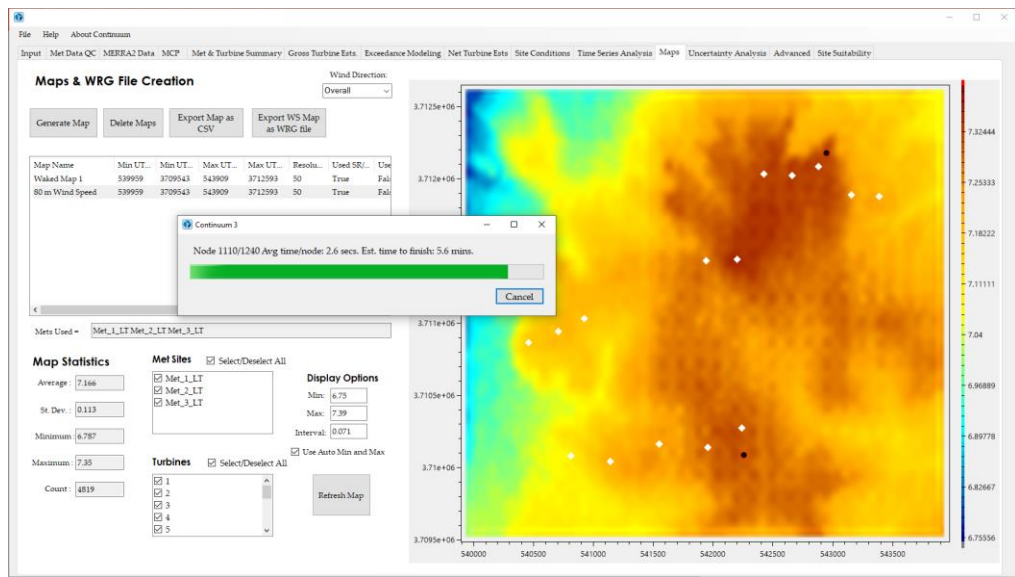
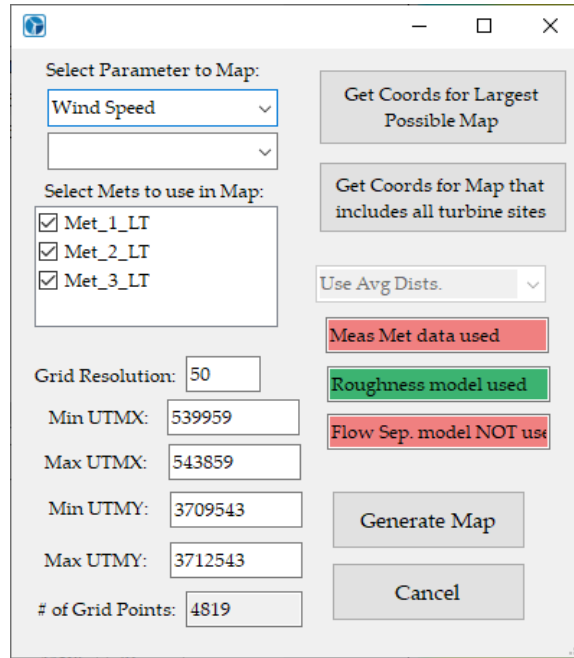
Learn how to generate wind speed (WS) maps and WRG files. WRG files contain the directional Weibull parameters at each grid point in the map and is used in several other wind energy software packages.

- 1) Create site-calibrated model
 - See tutorial
- 2) Create map
 - Go to 'Maps' tab
 - Click 'Generate Map'



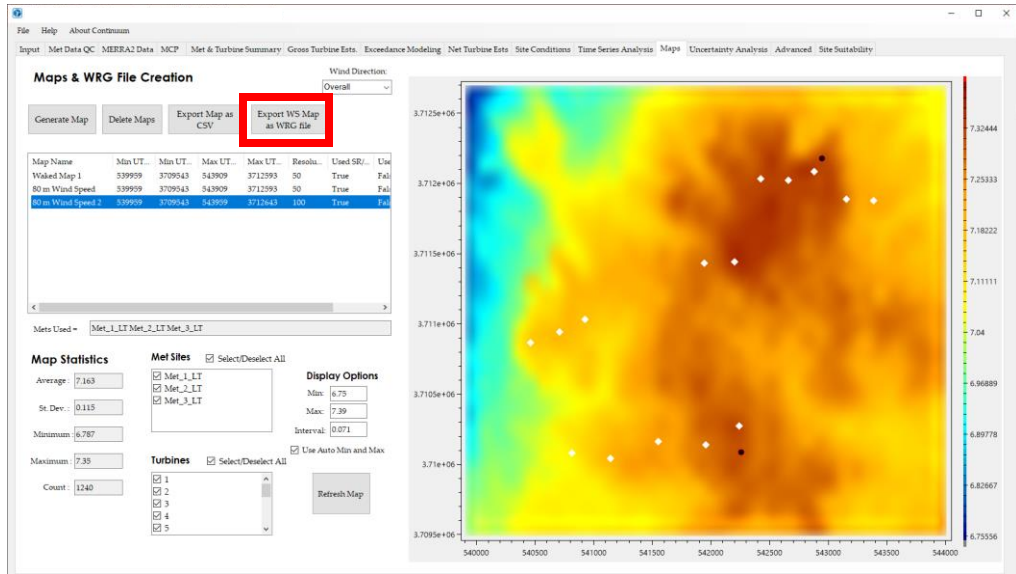
- Click 'Get Coords for Largest Possible Map' or 'Get Coords for Map that includes all turbine sites' or enter min/max UTM X/Y coordinates.
- Modify grid resolution (m), if desired
- Click 'Generate Map'

How to create WS maps and WRG files



3) Select maps from list and click 'Export WS Map as WRG file'

How to create WS maps and WRG files



- Enter the average air density (kg/m³)
- Specify where to save WRG file

