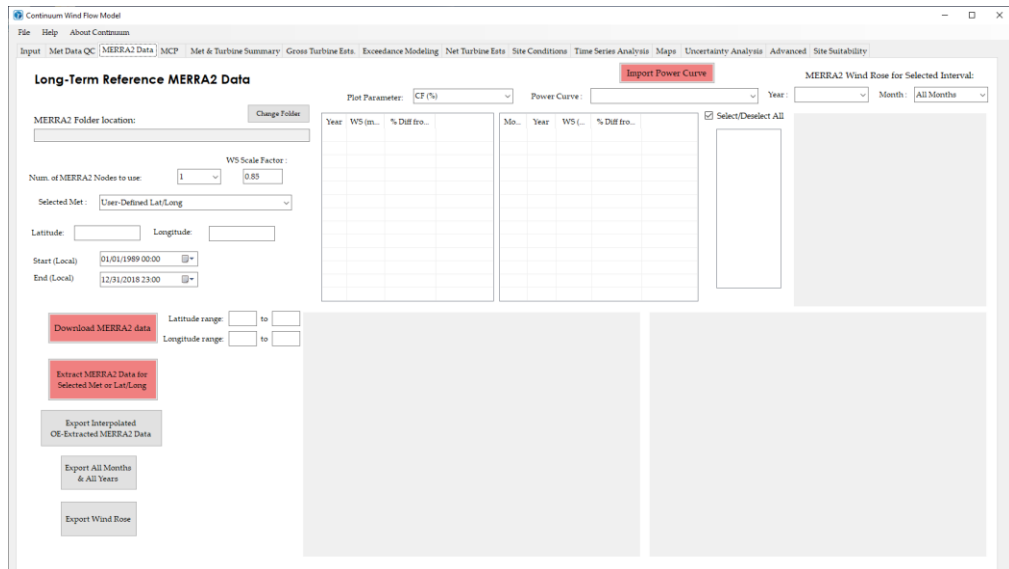


How to download MERRA2 data

Tutorial Summary:

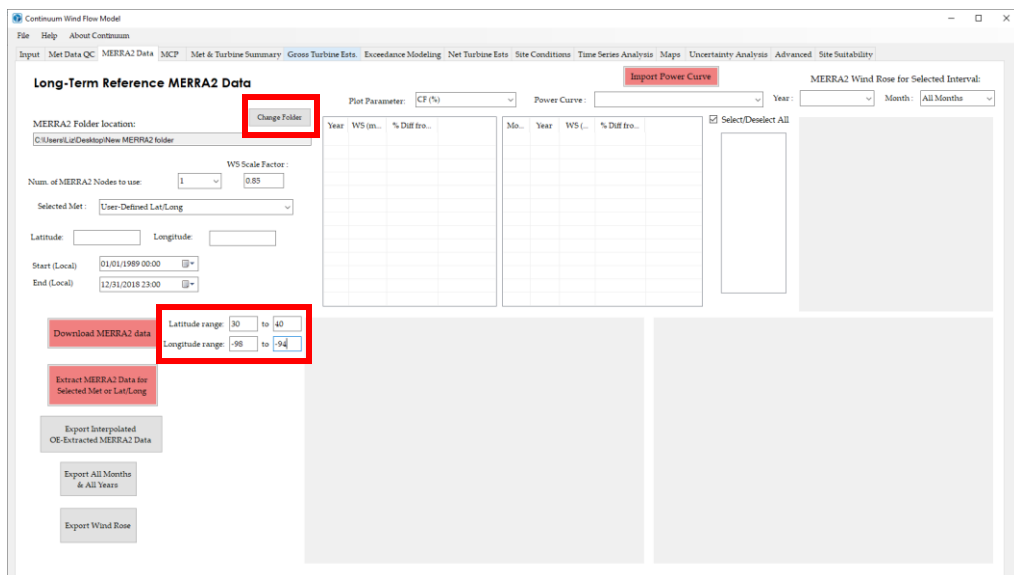
Learn how to download MERRA2 reanalysis data to your PC. If time series met data is imported in Continuum, MERRA2 50 m wind speed data is used in MCP (Measure-Correlate-Predict) to predict long-term wind speeds at each met site.

1) Go to MERRA2 tab



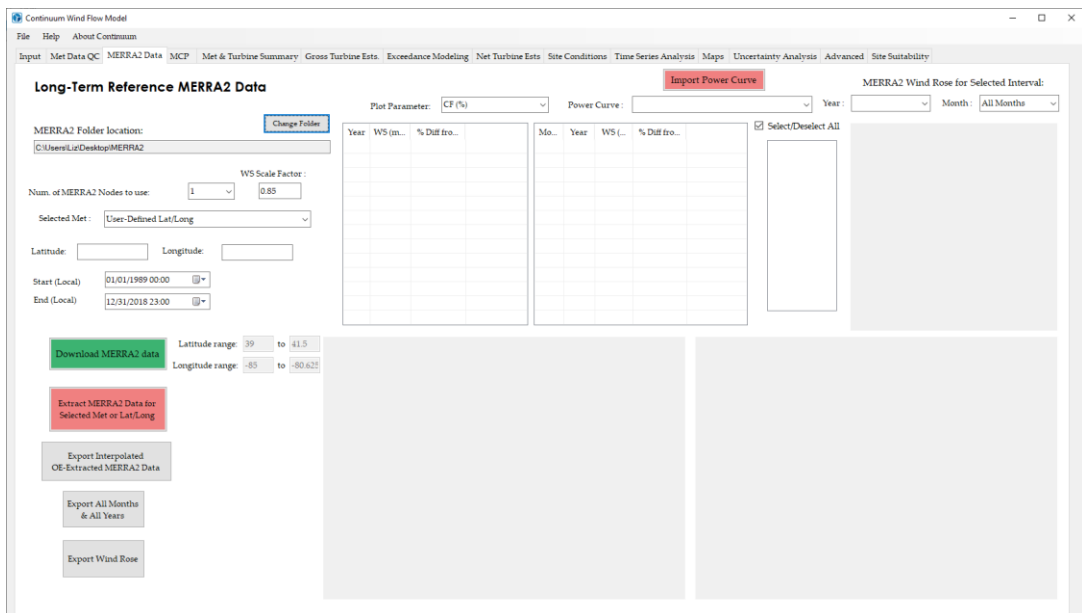
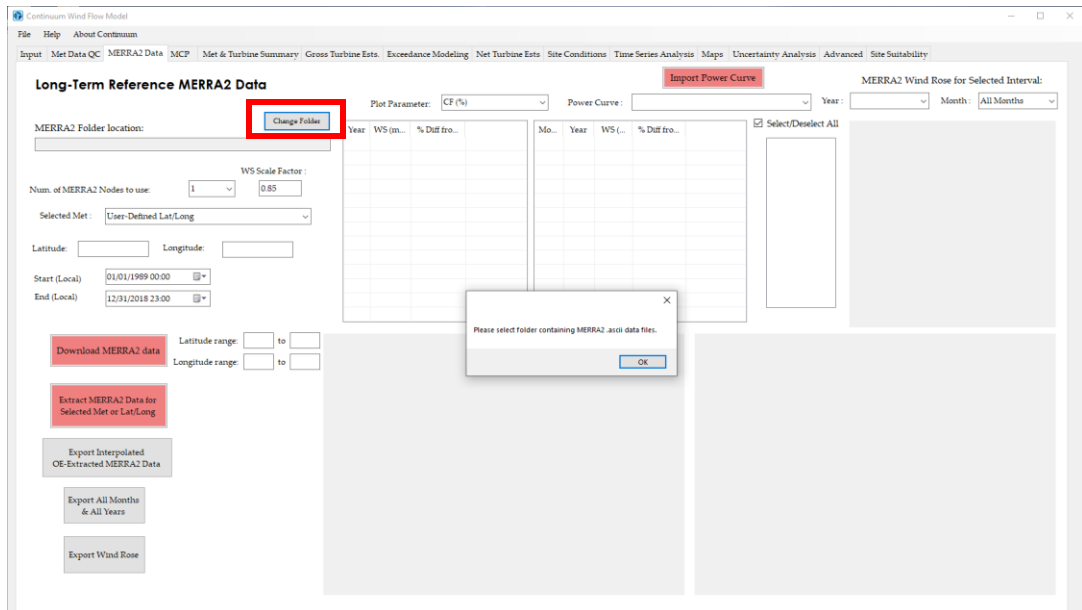
2) Select MERRA2 data file location.

- If new site,
 - Create folder
 - Click 'Change Folder'
 - Enter latitude and longitude range.



How to download MERRA2 data

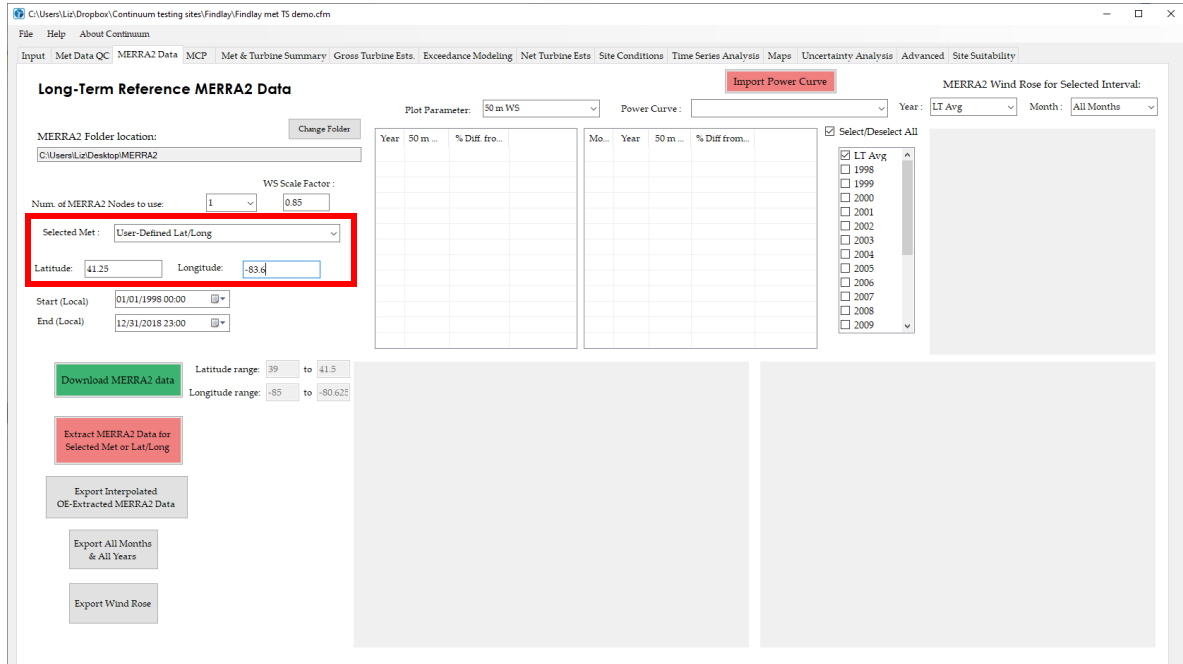
- If data has already been downloaded,
 - i. Click 'Change Folder'



3) Enter desired start and end dates

How to download MERRA2 data

- Click "Download MERRA2 data"
 - NASA Earthdata log-in required. To obtain an Earthdata account, go to: <https://urs.earthdata.nasa.gov/users/new>
- Select met site at which to extract MERRA2 OR select 'User-Defined Lat/Long' and enter latitude/longitude



- Extract MERRA2 for selected met or specified latitude/longitude

